



Extended Leadership Team

Chief Executive and Strategic Director



Arthur Charvonia
Chief Executive



Kathy Nixon
Deputy Chief Executive

Suzanne Hughes
Head of HR
and Organisational Development

Directors and Corporate Managers



Emily Atack
Assets & Investments/
Managing Director
(CIFCO + Gateway 14)

Sara Cameron
Strategic Property
Holly Brett
The Councils' Companies



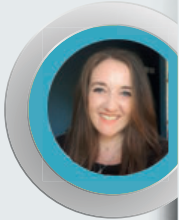
Ifty Ali
(Interim) Law & Governance

John Snell - Internal Audit
Janice Robinson - Governance & Civic Office
Edward McCreadie - Electoral Services
& Land Charges
Teresa Halliday - Legal Services
(In partnership with West Suffolk Council)



Deborah Fenton
Housing

Jane Branch - Head of Operations
Robert Longfoot - Tenant Services
Amma Antwi-Yeboah - Housing Solutions
Richard Spencer - Head of Asset & Investments



Melissa Evans
Corporate Resources

Bob Palmer (Interim) - Finance,
Commissioning & Procurement
Andrew Wilcock - Shared Revenues Partnership
(Business Rates & Ctax)
Amy Mayes - Shared Revenues Partnership
(Housing Benefit & Council Tax Reduction Scheme)
in partnership with Ipswich Borough Council



Mark Emms
Operations

Oliver Faiers - Recycling, Waste and Fleet
Nick Christo - Public Realm (Joins 2nd May)
Tracy Howard - Public Protection
Clyde Jackett - (Interim) Health & Safety, Business
Continuity & Emergency Planning



Sara Wilcock
Customers, Digital
Transformation and
Improvement

Samantha Lake - Customer Operations
Matthew Harding - ICT & Programme Management
Brad Jones - Communications & Engagement
Jo Hobbs - Strategic Policy, Performance, Insight & Risk



Tom Barker
Planning & Building Control
(Interim Communities &
Wellbeing)

Philip Isbell - Chief Planning Officer
Robert Hobbs - Strategic Planning
Paul Hughes - Building Control



Fiona Duhamel
Economic Growth
& Climate Change

Michelle Gordon - Economy
& Business



Di Robinson
Communities & Wellbeing
(Interim 8 days a month)
(Tom Barker covering the Director role temporarily)
(Shared post with Health)

Vicky Moseley - Communities

